

Index No. J-25

CERTIFICATE OF LOCATION OF GOVERNMENT CORNER

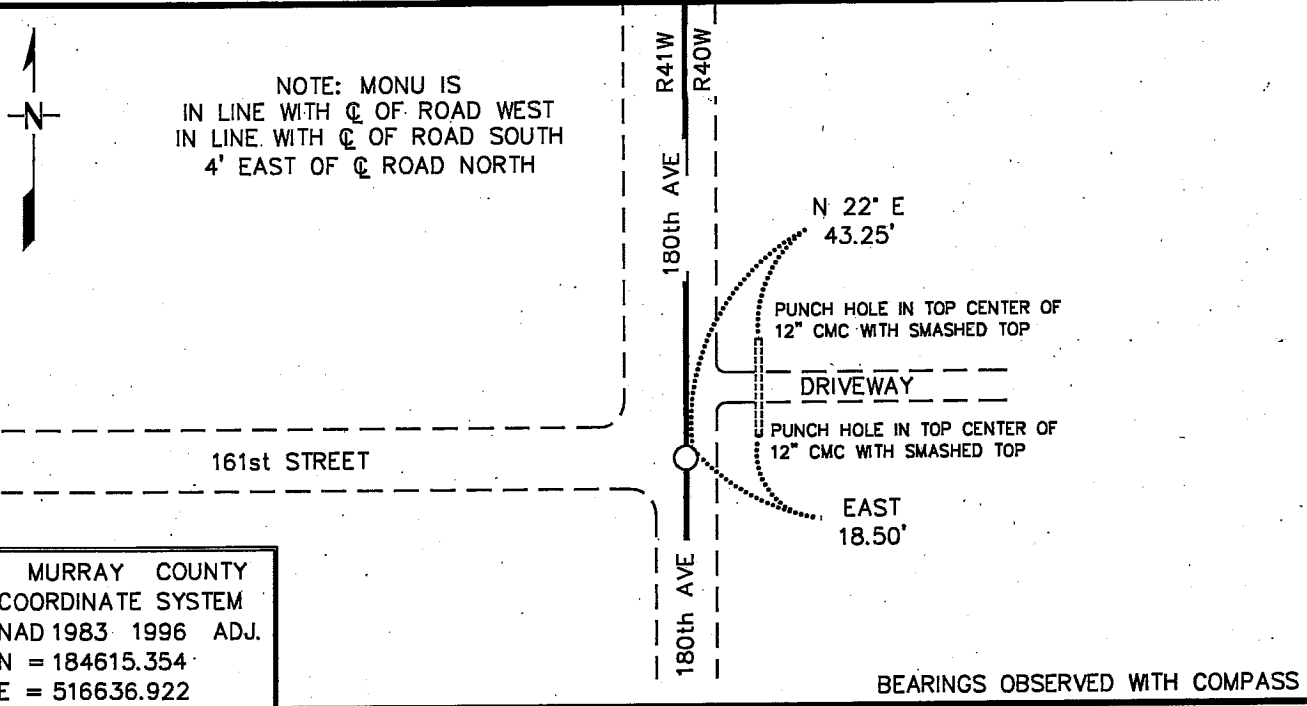
NORTHEAST Corner of Section 13, Township 107 N, Range 41 W
5th Principal Meridian, State of Minnesota, County of MURRAY

At the corner location shown on the sketch:

■ On 8/13/2008 found a 3/4" X 17" REBAR, DOWN 0.6', OVER A 3/4" X 18.5"
DATE BOLT, DOWN 22"

left monument as found, lowered monument, removed monument (explain)

■ On 8/13/2008 Placed a 3/4" X 24" REBAR WITH PLASTIC CAP STAMPED
DATE "MN DNR LS 17003", DOWN 0.6', IN PLACE OF FOUND REBAR AND BOLT



MURRAY COUNTY
COORDINATE SYSTEM
NAD 1983 1996 ADJ.
N = 184615.354
E = 516636.922

Statement of evidence for this corner location is on back of this page.

11/3/2008
SPK00220.00.00.01

I certify that this document was researched and prepared by me or under my direct supervision.

SIGNATURE Rene W. Huppel DATE 10/14/09 License Number 17003

Title: Land Surveyor Professional Engineer County Surveyor County Engineer

The DNR Division of Lands and Minerals contacted the following for survey information:

Minnesota Secretary of State's Office
Murray County Recorder's Office
Murray County Highway Engineer's Office
Bueltel-Moseng Land Surveying of Marshall
Zieske Land Surveying Inc. of Windom
Madsen Land Surveying Inc. of Fairmont
Pellinen Land Surveying of Hutchinson

1861 U.S. General Land Office notes, obtained from the Secretary of State's Office, show the corner marked with a wood post and a charred stake in a mound of earth with trench and pits as per instructions.

1966 The plat of GRAND VU ACRES in Government Lot 4 of Section 12, by J.S. Richmond, LS 2129, obtained from the County Recorder's Office, shows a symbol for the corner but does not indicate what kind of monument was found or set. The east line of the plat abuts part of the east line of Section 12. The southeast corner of Section 12 is shown 2774 feet from the southeast corner of the plat.

1973 April 25, the DNR Bureau of Engineering performed a survey in Section 18 and set a spike for an assumed location for the corner at the intersection of roads south and west and in line with a fences north and east. The spike was found to be:
2645.61 feet from the west quarter corner of Section 18

1996 June 4, Murray County Highway Department section corner information website, states that a 3/8 inch rod was located at the corner, 6 inches deep. The following ties are shown to the corner:
N&C PP NW 71.50 feet
North post of arrow sign NE 49.45 feet
N&C post SW 68.85 feet

2008 August 13, the DNR Division of Lands and Minerals hired a backhoe, operated by Butch Barton of B & L Excavation, Inc. of Currie, to dig for evidence of a monument at the corner. A 3/4 inch by 17 inch long rebar was found down 0.6 of a foot, over a 3/4 inch by 18 1/2 inch long bolt down 22 inches. A 5.5 foot north-south by 3.5 foot east-west by 4.5 foot deep hole was dug, the center being the found bolt and natural ground was encountered at a depth of 3.5 feet. The bottom of the excavation were scanned with an electronic metal detector but no metal attraction was obtained.

Searched for but found no evidence of the record ties.

The bolt was found to be:

- a) in line with the centerline of road west (161st Street)
- b) in line with the centerline of road south (180th Avenue)
- c) 4 feet east of centerline of road south (180th Avenue)
- d) 2771.57 feet from a 1/2 inch iron pipe found on the easterly line of GRAND VU ACRES

Northeast Corner of Section 13, Township 107 North, Range 41 West, Page 2 of 2

Analysis of the above information led the DNR Division of Lands and Minerals to conclude that the found bolt marks the location of the corner. The found bolt and rebar were discarded and a $\frac{3}{4}$ inch by 24 inch rebar with a plastic cap stamped "MN DNR LS 17003" was set in their location and ties were taken to it as shown on the sketch of reference ties.